

Center Harbor, New Hampshire Village Sidewalks Improvement Program



NHDOT Transportation Alternatives Program
Round 5 – 2024 Application for Funding
Lakes Region Planning Commission
March 5, 2025



Project Location Map

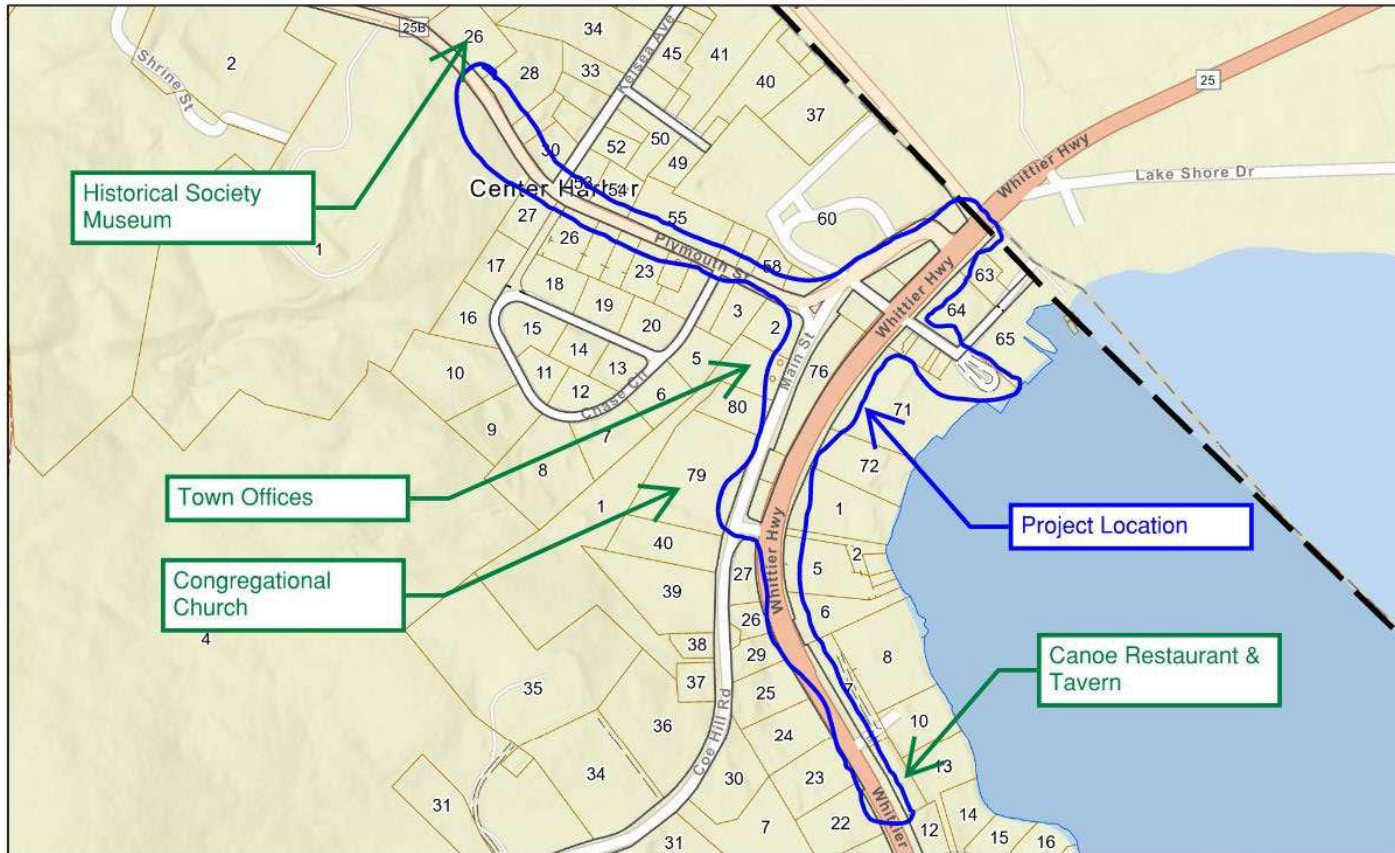
Town of Center Harbor, NH



February 23, 2025

1 inch = 500 Feet

www.cai-tech.com



Data shown on this map is provided for planning and informational purposes only. The municipality and CAI Technologies are not responsible for any use for other purposes or misuse or misrepresentation of this map.





Existing Conditions

- Approximately 5100 LF of existing sidewalk in various stages of deterioration, various widths, poor pedestrian protection and non-compliance with ADA, examples:
 - Sidewalk along Plymouth Street is of 3'-5' width, no pedestrian protection.
 - Sidewalk of Main Street to Lake Street has steps – Not ADA compliant.
 - Sidewalk from Town offices past Congregational Church has no pedestrian protection, is in poor condition with tripping hazards.
 - Main Street sidewalk at Town Offices, Post Office, Library is shared use.
- No sidewalks along NH Route 25 for access to lodging, restaurants, recreation facilities – shared use of roadway shoulder only
- Shared use on local roadways.
- Limited / no access to residential areas surrounding the Village core.
- No connectivity from Town docks to daily sportsman parking at the Congregational Church.
- Single controlled pedestrian crossing of NH Route 25, near Moultonborough Town Line, signed crossing of NH Route 25 at Lake Street.
- Stormwater systems are challenged due to age, deterioration, and capacity.



Purpose & Need

Purpose

- Enhance Village core for safe pedestrian connectivity between Town facilities, lodging, restaurants, commercial areas, recreational area, for cultural events, i.e. Band Stand, and transportation – Mount Washington and Concord Trailways
- Provide connectivity for residents to the Village core.

Need

- Existing sidewalks are limited to approximately 5100 LF and majority are severely deteriorated.
- Existing sidewalks do not provide pedestrian protection and are not ADA compliant.
- Approximately 1600 LF of additional new sidewalks are required for safe connectivity.
- Three new crosswalks are required.
- Redevelop NH Route 25 / Lake St. crosswalk with RRFB



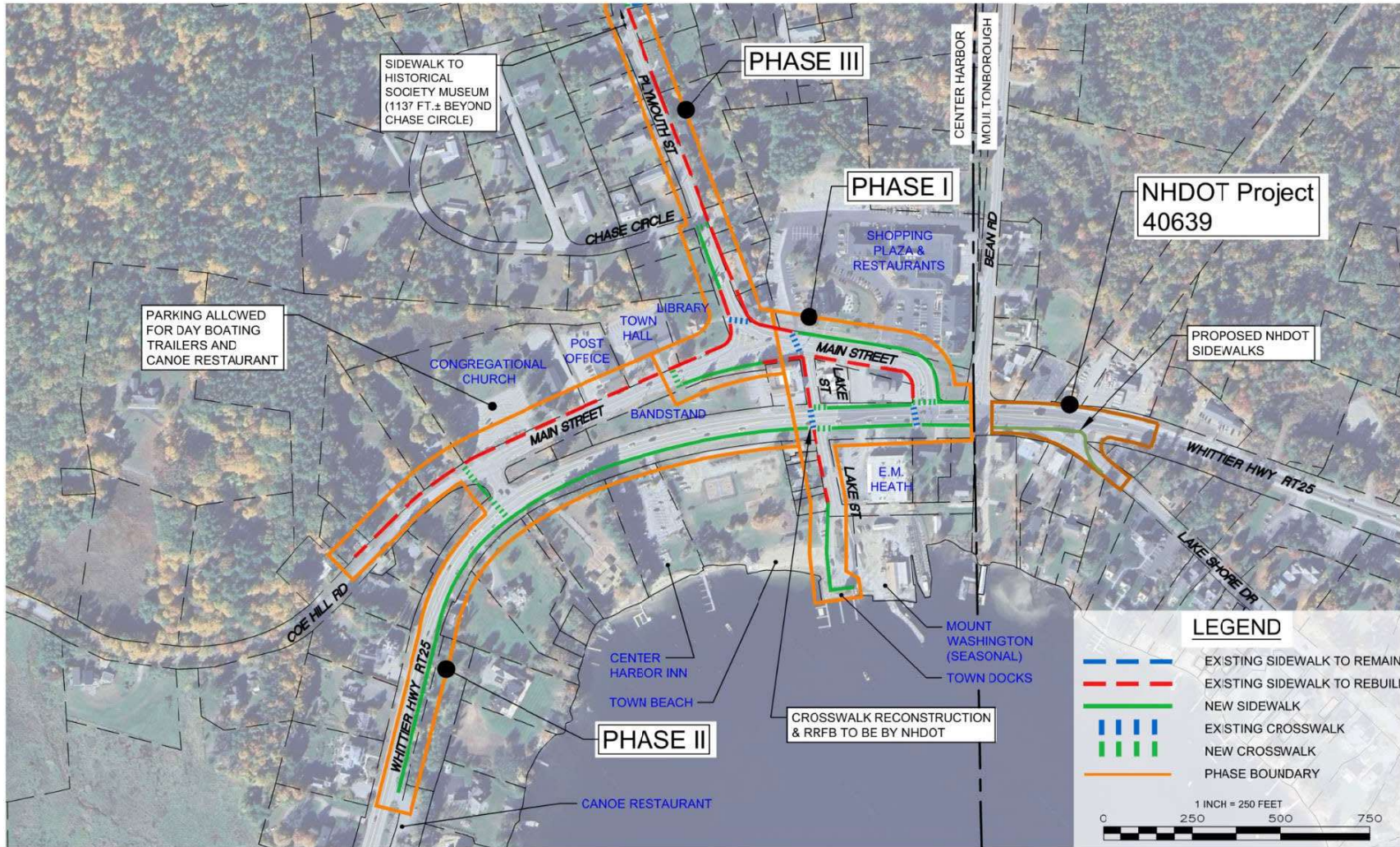


Overall Sidewalk Program

- Three Phases
- Each Phase approximately 2500 LF +/- of reconstructed and new sidewalks
- Each Phase approximately \$1.0M (2025 dollars)
- Integrated stormwater drainage system improvements
- Supported by Town Master Plan
- Supported by Center Harbor Sidewalk Committee



VILLAGE SIDEWALKS
TOWN OF CENTER HARBOR, NH
FEBRUARY 24, 2025





Phase One NHDOT TAP ROUND 5

Project Need

- Addresses center of Village for connectivity and safety in highest density use area.
- Access to Lake Winnepesaukee, transportation, concentration of businesses, Town Band Stand.
- Phase One provides connectivity to Moultonborough NH Rte. 25 commerce & residential.
- Phase One could connect with NHDOT Project #40639 Moultonborough if NHDOT extends project to Center Harbor Town Line
- Stormwater drainage improvements incorporate versus after the fact.

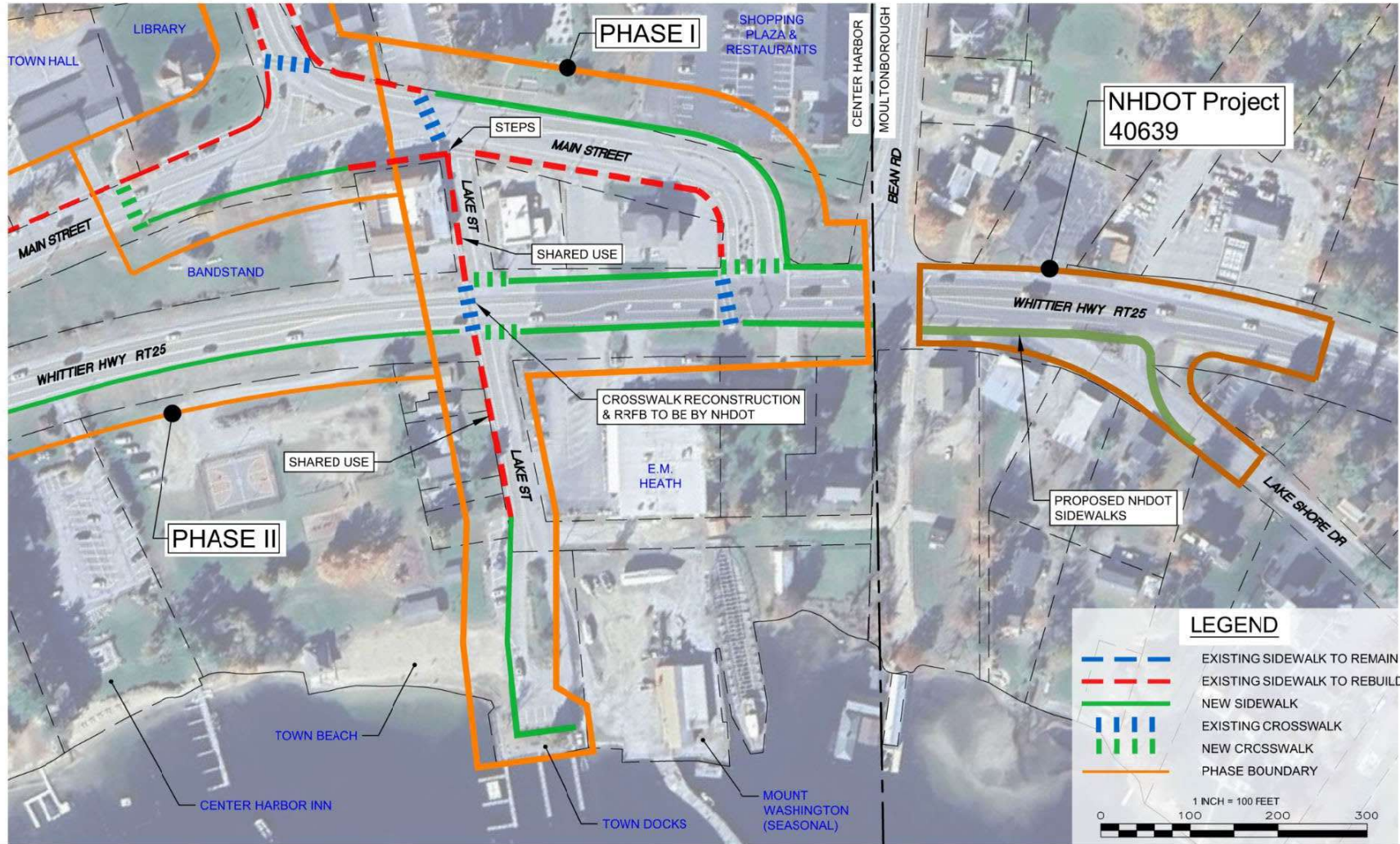




VILLAGE SIDEWALKS

TOWN OF CENTER HARBOR, NH

FEBRUARY 24, 2025





Phase One Safety Concerns

- NH Rte. 25 ADT – 14,000 vpd
- Plymouth Street (NH Rte. 25B) ADT – 2,500 vpd.
- Main Street sidewalk at roadway grade.
- Main Street / Lake Street sidewalk not ADA compliant
- Shared use on NH Rte 25
- Only one single side sidewalk on Plymouth Street now.
- Highest density of pedestrian use
- Lake Street shared use on both segments – Main to NH Rte 25 & NH Rte. 25 to docks and beach.





Phase One

Proposed Design

- **Improve Safety**
 - ADA compliant.
 - 5-foot paved sidewalks.
 - Vertical granite curbing at road edge of pavement for pedestrian safety.
 - Controlled NH Rte 25 crosswalks – existing signals, RRFB at Lake (NHDOT)

- **Connectivity**
 - Village Core – Shops, restaurants, commercial, municipal, bandstand, town beach, town docks.
 - Transportation – Mount Washington
 - Demographics – Residents, visitors, Lake Winnepesaukee water frontage (by boat)
 - Regional – Moultonborough commerce, retail, residential and transportation (Concord Trailways)



Phase One

Proposed Design

- **Right-of-Way**

- Within existing Right-of-Way – NHDOT & Municipal.
- Easements for back of sidewalk grading.

- **Community Benefits**

- Safe pedestrian connectivity throughout the Village core.
- Economic benefit for Village core from residents, visitors, and lake frontage
- Environmental Justice for ADA accessible sidewalks to residential, transportation, recreational, cultural land uses.
- Regional – Moultonborough commerce, retail, residential and transportation (Concord Trailways).

Regional Benefits

- Town of Moultonborough connectivity.
- Lake Winnepesaukee connectivity – lake property, sportsmen, recreation.



Town Commitments

- Sidewalk Committee oversight.
- Sidewalk Committee & Board of Selectmen approval.
- Town soliciting for winter maintenance of existing sidewalks.
- Town committed to funding project through warrant / TAP reimbursement.
- Master Plan compliant.
- Coincides with development of the Town's Village Stormwater Asset Management Plan partially funded by NHDES Stormwater CWSRF program.
- Ongoing regional planning opportunity discussions with Moultonborough, LRPC and NHDOT.



QUESTIONS ?

