

# Closed Culverts and Drainage System (CCDS)

## Inventory and Assessment

### What is CCDS?

The CCDS program is a partnership between the State of New Hampshire Department of Transportation (NHDOT), the University of New Hampshire Technology Transfer Center (UNH T2), and the Regional Planning Commissions. This program allows municipalities to have digital and paper maps displaying the locations of their culverts; this also includes tables that contain information on the culvert's dimensions, condition, and other attributes.

### Why is it important?

Knowing the locations of your assets, and having their attribute information, is important! Drainage is a very important thing when it comes to mitigating costly road repairs, damage to other infrastructure, and even the threat of bodily harm or death from washout/flash flooding. As we've seen in recent events this year, all it takes is a few abnormal storms, or weeks of rain, to cause significant and costly issues in our communities. This CCDS program can help your road crews to find drainage locations, see their conditions, and create a maintenance plan effectively. This tool can also be used in conjunction with scheduling road repair. This information can also be easily passed on to new employees that need to know!



Water damage in Center Barnstead, NH 2023



Water damage in Barnstead, NH 2023

### How is it collected?

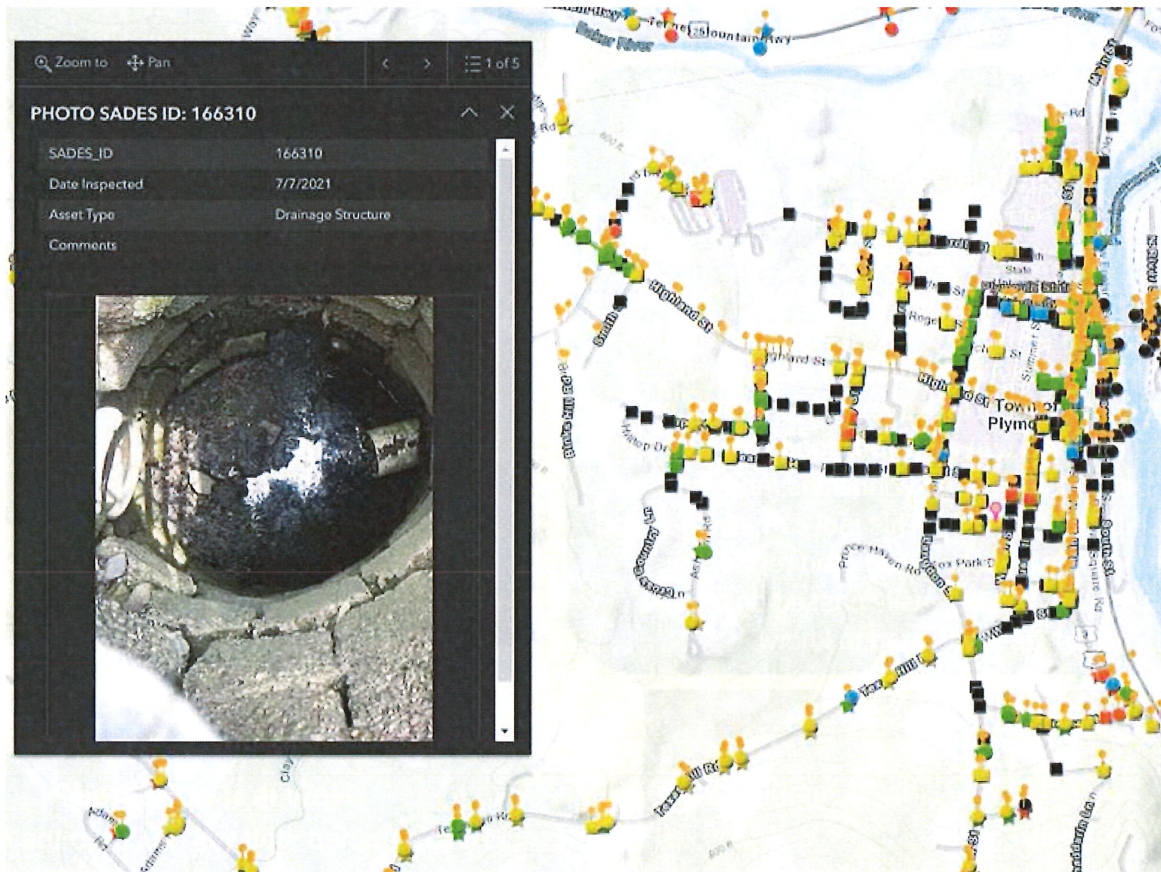
LRPC's trained staff will go out to the field and collect this data using the UNH T2 standard protocol for assessing drainage systems. LRPC staff, using tablets with ESRI Field Maps, will mark the drainage system's location and will fill out a standard table of information for each location. This information is then uploaded onto the NH Statewide Asset Database Exchange System (NHSADES), where it can be viewed electronically. Below is a link to the NHSADES online mapping tool where examples of past work can be viewed:  
<https://nhsades.maps.arcgis.com/home/index.html>



## Deliverables

Below are the deliverables that a municipality will generally receive from a CCDS project:

- A full inventory of drainage features (inlets, outlets, pipes, catch basins, drop inlets, and manholes) including measurements and condition ratings for many of the features (some limitations).
- Interactive digital map that shows the location and details of each drainage feature.
- Multiple pictures of each drainage feature (viewable through online map).
- A detailed report explaining the results and how to interpret the data.



CCDS interactive map

## For More Information

- Visit: <https://www.lakesrpc.nh.gov/Pages/Index/22833/transportation>
- Email: Glenn Trefethen, Transportation Planner [gtrefethen@lakesrpc.nh.gov](mailto:gtrefethen@lakesrpc.nh.gov) OR David Jeffers, Planning Manager [djeffers@lakesrpc.nh.gov](mailto:djeffers@lakesrpc.nh.gov)